



toxplanet

TUTORIAL

Similar Compounds

Print, Email, Save Results

Similar Compounds is a powerful tool that fully automates the process of searching for chemical analogs. Using ToxPlanet's proprietary functionality, it allows for instant identification of structurally similar compounds. In this tutorial, we will look at how to **Print**, **Email**, and **Save** results from your Similar Compounds search.

EXPERTIndex™ Search

Search Term

phenol

- Starts With
 Exact Match
 Contains

Submit

Clear

Full Text Search

MSDSonline® Advanced

TOXLINE® Special
AdvancedREACH Registrations
AdvancedTSCATS
Complete™ Advanced

ListEXPERT - List View

Chemical Identity ChemEXPERT™ ReproEXPERT™ ListEXPERT™ PoisonEXPERT™ REACH Registrations
C & L Inventory DrugEXPERT™ TOXLINE® Special ECIS TSCATS *Complete*™ MSDSonline® [Similar Compounds](#)
MyEXPERT™

Similar Compounds Search Results

Tanimoto Threshold

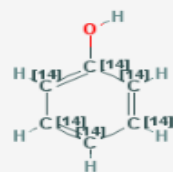


Sort By: Chemical Name CAS Number % Similarity Ascending Descending
Page Size: 10 30 50

[About the results](#)

Prev 1 2 3 4 Next

showing 1 - 30 of 111



Phenol-UL-14C

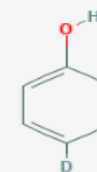
Similarity: 100%

CAS Registry Number: 53379-77-4

Molecular Formula: C6H6O

Molecular Weight: 106.066

SMILES: C1=CC=C(C=C1)O

InChi Key: ISWSIDIOOBJBQZ-
YROCTSJKSA-N

Phenol-4-d1

Similarity: 100%

CAS Registry Number: 23951-03-3

Molecular Formula: C6H6O

Molecular Weight: 95.119

SMILES: C1=CC=C(C=C1)O

InChi Key: ISWSIDIOOBJBQZ-
MICDWDJOJSA-N

After conducting a Similar Compounds search, results are displayed based on designated level of similarity to the compound being searched (in this example, results shown are those with 90% structural similarity to *phenol*).

EXPERTIndex™ Search

Search Term

phenol

- Starts With
 Exact Match
 Contains

Submit

Clear

Full Text Search

MSDSonline® Advanced

TOXLINE® Special
AdvancedREACH Registrations
AdvancedTSCATS
Complete™ Advanced

ListEXPERT - List View

Chemical Identity ChemEXPERT™ ReproEXPERT™ ListEXPERT™ PoisonEXPERT™ REACH Registrations
C & L Inventory DrugEXPERT™ TOXLINE® Special ECIS TSCATS *Complete*™ MSDSonline® [Similar Compounds](#)
MyEXPERT™

Similar Compounds Search Results

Tanimoto Threshold



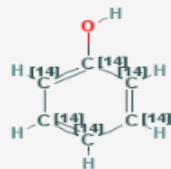
Sort By: Chemical Name CAS Number % Similarity Ascending Descending
Page Size: 10 30 50

[About the results](#)

Prev 1 2 3 4 Next



showing 1 - 30 of 111



Phenol-UL-14C

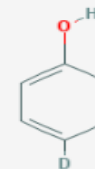
Similarity: 100%

CAS Registry Number: 53379-77-4

Molecular Formula: C6H6O

Molecular Weight: 106.066

SMILES: C1=CC=C(C=C1)O

InChi Key: ISWSIDIOOBJBQZ-
YROCTSJKSA-N

Phenol-4-d1

Similarity: 100%

CAS Registry Number: 23951-03-3

Molecular Formula: C6H6O

Molecular Weight: 95.119

SMILES: C1=CC=C(C=C1)O

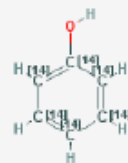
InChi Key: ISWSIDIOOBJBQZ-
MICDWDJOJSA-N

You can print current page results by clicking the purple PDF icon.

Similar Compounds Search Results

CAS Number: 108-95-2, Threshold: 90

Page 1 of 4 (page size: 30)



Phenol-UL-14C

Similarity: 100%

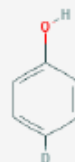
CAS Registry Number: 53379-77-4

Molecular Formula: C₆H₆O

Molecular Weight: 106.066

SMILES: C1=CC=C(C=C1)O

InChI Key: ISWSIDIOOBJBQZ-YROCTSJKSA-N



Phenol-4-d1

Similarity: 100%

CAS Registry Number: 23951-03-3

Molecular Formula: C₆H₆O

Molecular Weight: 95.119



1

/ 15



The system converts the document to PDF format and displays it in a new window with native Adobe controls. Use these controls to **Print** or **Save** the results list, or to attach a copy of the saved list to an **Email**.



toxplanet

For more information, visit our website

www.toxplanet.com