



toxplanet

TUTORIAL

EXPERTIndex™ “Starts With” Searching

The **EXPERTIndex™** is ToxPlanet's proprietary index feature. Containing more than 1 million unique substances, and with nearly 5 million terms and synonyms, it is an extremely powerful and efficient tool for chemical searching. When a search is conducted via the EXPERTIndex, results are consistent regardless of which synonym or chemical identifier is used. This yields a more fine-tuned search and results that are 100% relevant. The EXPERTIndex has three different search modes (**Starts With**, **Exact Match**, and **Contains**), and in this tutorial we will look at how to conduct a “**Starts With**” search.

EXPERTIndex™ Search

Search Term

- Starts With
 Exact Match
 Contains

Full Text Search

MSDSonline® Advanced

TOXLINE® Special
AdvancedREACH Registrations
Advanced

Welcome to the ToxPlanet System

Our products have been designed to provide fast, easy, and intuitive access to a collection containing **millions** of documents covering over **1,000,000** unique substances. This page is intended to give you a quick overview of how our system works.

The ToxPlanet products can be searched using seven different **Search Modes**. Select from the left search panel to switch between **Search Modes**.

EXPERTIndex™ Search

Full Text Search

MSDSonline® Advanced

TOXLINE® Special Advanced

REACH Registrations Advanced

TSCATS *Complete*™ Advanced

ListEXPERT - List View

To conduct a “**Starts With**” search, start by clicking the **EXPERTIndex™ Search** button on the left side of the screen. This brings up a search box and several searching options (**Starts With**, **Exact Match**, and **Contains**). The **Starts With** radio button is enabled as it is the default setting.

EXPERTIndex™ Search

Search Term

butan

- Starts With
 Exact Match
 Contains

Submit

Clear

Full Text Search

MSDSonline® Advanced

TOXLINE® Special
AdvancedREACH Registrations
Advanced

Welcome to the ToxPlanet System

Our products have been designed to provide fast, easy, and intuitive access to a collection containing **millions** of documents covering over **1,000,000** unique substances. This page is intended to give you a quick overview of how our system works.

The ToxPlanet products can be searched using seven different **Search Modes**. Select from the left search panel to switch between **Search Modes**.

EXPERTIndex™ Search

Full Text Search

MSDSonline® Advanced

TOXLINE® Special Advanced

REACH Registrations Advanced

TSCATS *Complete*™ Advanced

ListEXPERT - List View

Enter the desired search term in the search box (for example, *butan*), and click the **Submit** button to execute the search.

EXPERTIndex™ Search

Search Term

butan

- Starts With
 Exact Match
 Contains

Full Text Search

MSDSonline® Advanced

TOXLINE® Special
AdvancedREACH Registrations
Advanced

EXPERTIndex™ Search Results

Page: 1 | Print Page | Paging: ← → | Go To Page: GO | Total Rows: 7083 | Total Pages: 203

Chemical Substance	Chemical Number	Chemical Formula
Butan	106-97-8	C4-H10
butan - 1 - ol	71-36-3	C4-H10-O
butan - 2 - ol	78-92-2	C4-H10-O
Butan- 1- ol	71-36-3	C4-H10-O
Butan-1-(2H)ol	4712-38-3	C4-H9-D-O
Butan-1-[2H]ol	4712-38-3	C4-H9-D-O
Butan-1,4-diol	110-63-4	C4-H10-O2
Butan-1,4-diyl 4-carboxy-4-(((1-(diethoxyphosphinyl)-2,2-dimethylpropyl)(1,1-dimethylethyl)amino)oxy)-2,2-dimethylbutanoate.	850348-10-6	Unspecified

The search returns a tabular list of chemical terms based on the established search criteria (e.g., *butan* and “Starts With”). In this example, the list includes all terms in the index which start with “*butan*”. In addition to **Chemical Substance**, this display also provides **Chemical Number** and **Chemical Formula** information, as well as the number of rows and pages in the results list.

EXPERTIndex™ Search

Search Term

butan

- Starts With
 Exact Match
 Contains

Full Text Search

MSDSonline® Advanced

TOXLINE® Special
AdvancedREACH Registrations
Advanced

EXPERTIndex™ Search Results



Page: 1

[Print Page](#)

Paging:



Go To Page:

[GO](#)

Total Rows: 7083

Total Pages: 203

Chemical Substance	Chemical Number	Chemical Formula
Butan	106-97-8	C4-H10
butan - 1 - ol	71-36-3	C4-H10-O
butan - 2 - ol	78-92-2	C4-H10-O
Butan- 1- ol	71-36-3	C4-H10-O
Butan-1-(2H)ol	4712-38-3	C4-H9-D-O
Butan-1-[2H]ol	4712-38-3	C4-H9-D-O
Butan-1,4-diol	110-63-4	C4-H10-O2
Butan-1,4-diyl 4-carboxy-4-(((1-(diethoxyphosphinyl)-2,2-dimethylpropyl)(1,1-dimethylethyl)amino)oxy)-2,2-dimethylbutanoate.	850348-10-6	Unspecified

You can navigate the results pages using either the paging arrows or the “Go To Page” box.

EXPERTIndex™ Search

Search Term

butan

- Starts With
 Exact Match
 Contains

Submit Clear

Full Text Search

MSDSonline® Advanced

TOXLINE® Special
AdvancedREACH Registrations
Advanced

EXPERTIndex™ Search Results

Page: 1

Print Page

Paging:



Go To Page:

GO

Total Rows: 7083

Total Pages: 203

Chemical Substance	Chemical Number	Chemical Formula
Butan	106-97-8	C4-H10
butan - 1 - ol	71-36-3	C4-H10-O
butan - 2 - ol	78-92-2	C4-H10-O
Butan- 1- ol	71-36-3	C4-H10-O
Butan-1-(2H)ol	4712-38-3	C4-H9-D-O
Butan-1-[2H]ol	4712-38-3	C4-H9-D-O
Butan-1,4-diol	110-63-4	C4-H10-O2
Butan-1,4-diyl 4-carboxy-4-(((1-(diethoxyphosphinyl)-2,2-dimethylpropyl)(1,1-dimethylethyl)amino)oxy)-2,2-dimethylbutanoate.	850348-10-6	Unspecified



You can also print results by using the “Print Page” function or by clicking on the orange PDF icon.

EXPERTIndex™ Search

Search Term

butan

- Starts With
 Exact Match
 Contains

Submit

Clear

Full Text Search

MSDSonline® Advanced

TOXLINE® Special
AdvancedREACH Registrations
Advanced

EXPERTIndex™ Search Results

Page: 1 | Print Page | Paging: ← → | Go To Page: GO | Total Rows: 7083 | Total Pages: 203

Chemical Substance	Chemical Number	Chemical Formula
Butan	106-97-8	C4-H10
butan - 1 - ol	71-36-3	C4-H10-O
butan - 2 - ol	78-92-2	C4-H10-O
Butan- 1- ol	71-36-3	C4-H10-O
Butan-1-(2H)ol	4712-38-3	C4-H9-D-O
Butan-1-[2H]ol	4712-38-3	C4-H9-D-O
Butan-1,4-diol	110-63-4	C4-H10-O2
Butan-1,4-diyl 4-carboxy-4-(((1-(diethoxyphosphinyl)-2,2-dimethylpropyl)(1,1-dimethylethyl)amino)oxy)-2,2-dimethylbutanoate.	850348-10-6	Unspecified

Select the Chemical Substance for which you would like to find additional information.

EXPERTIndex™ Search

Search Term

butan

- Starts With
 Exact Match
 Contains

Submit

Clear

Full Text Search

MSDSonline® Advanced

TOXLINE® Special
AdvancedREACH Registrations
Advanced

Chemical Identity

ChemEXPERT™

ReproEXPERT™

ListEXPERT™

PoisonEXPERT™

REACH Registrations

C & L Inventory

DrugEXPERT™

TOXLINE® Special

ECIS

TSCATS Complete™

MSDSonline®

Similar Compounds

MyEXPERT™

Chemical Identity Search Results

Name of Substance

1,4-Butanediol

CAS Registry Number

110-63-4

Molecular Formula

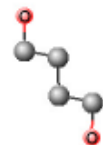
C4-H10-O2

Other Registry Numbers

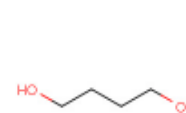
732189-03-6; 1204746-06-4; 1400594-63-9

SMILES

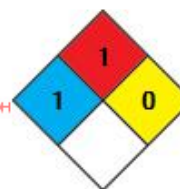
OCCCCO



Enlarge



Enlarge



NFPA 704



View



After selecting a Chemical Substance, the system retrieves the Chemical Identity page for that substance. Selected information about the substance is displayed in the Chemical Identity page, including structural identifiers, synonyms, classification codes, descriptors, chemical and physical properties, structural representations, and much more. View full-text documents on the substance by clicking on the respective Product Tabs (ChemEXPERT, ReproEXPERT, etc.).



toxplanet

For more information, visit our website

www.toxplanet.com